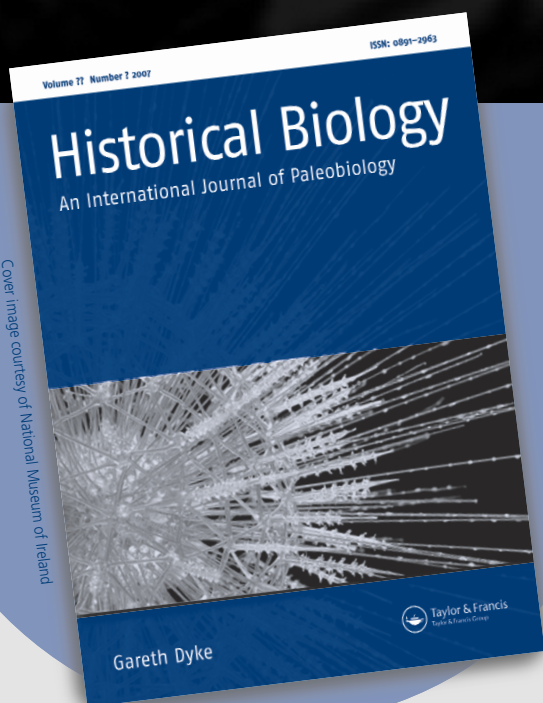


# Historical Biology

AN INTERNATIONAL JOURNAL OF PALEOBIOLOGY

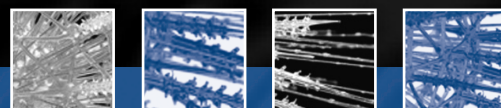


Cover image courtesy of National Museum of Ireland

## EDITOR-IN-CHIEF:

**Gareth Dyke**, *University College Dublin, Ireland*

**Historical Biology** provides a vehicle for developments in the sciences concerned with the history of life through geological time and the biology of past organisms, and seeks to encourage a diversity of approaches in this rapidly expanding field. It emphasizes modern and controversial topics. Its range includes paleobiology, paleoethology, paleobiogeography, evolutionary processes and patterns, molecular paleontology, extinction, phenomena, taphonomy, and aspects of geology, geochemistry and geophysics that have a direct bearing on paleobiological questions. The journal will provide an international outlet for high quality papers that deal with systematics and evolutionary trends within animal and plant groups having both living and fossil representatives.



**Historical Biology:  
Proceedings of the Dublin  
Blaschka Congress**

**SPECIAL ISSUE!**

Volume 20, Issue 1

**ONLY £15 / US\$30 / €22**

Contact [Jason.Millar@tandf.co.uk](mailto:Jason.Millar@tandf.co.uk)  
to order your copy, quoting code **'UG003025'**

## GUEST EDITOR-IN-CHIEF:

**Julia Sigwart**, *University College Dublin, Ireland*  
[julia.sigwart@ucd.ie](mailto:julia.sigwart@ucd.ie)

## Order of Papers:

- **J.D. Sigwart**, *National Museum of Ireland & University College Dublin, Ireland*  
Crystal Creatures: context for the Dublin Blaschka Congress
- **S.M. Rossi-Wilcox**, *Harvard University, USA*  
From Reference Specimen to Verisimilitude: The Blaschkas' Pendant for Botanical Accuracy
- **S. Hackethal**, *Museum of Natural History, Humboldt University of Berlin, Germany*  
The Blaschka models of the Humboldt University of Berlin and their historical context
- **R. Dyer**, *York University, Toronto, Canada*  
Learning Through Glass: The Blaschka Marine Models in North American Post Secondary Education
- **G.N. Swinney**, *National Museums Scotland & University of Edinburgh, UK*  
Enchanted invertebrates: Blaschka models and other simulacra in National Museums Scotland
- **C.G. Miller & M. Lowe**, *The Natural History Museum, London, UK*  
The Natural History Museum Blaschka Collections
- **T.A.P. Van Leeuwen**, *The Berlage Institute, Rotterdam, The Netherlands*  
Mezzanine Art, Or The Stor(e)y Between Science And Art

To view a free online sample copy, go to:

**www.informaworld.com/HisBio**



**Taylor & Francis**  
Taylor & Francis Group

