

# Óm ÁBHAR agus Meon

## Materials and Mentalities



Is sraith de thaispeántais ealaíne chomhaimseartha idirnáisiúnta é *Ábhar agus Meon* a shoilsiúnn naisc éagsúla idir téamaí agus cleachtais na healaíne agus na seandálaíochta. Tá an tsraith seo á léiriú mar chuid den Séú Comhdháil Seandálaíochta Dhomhanda a reachtófar i gColáiste Ollscoile, Baile Átha Cliath le linn Meitheamh / Iúil 2008.

*Ábhar agus Meon* is an international contemporary art exhibition series exploring relationships between the themes and practices of art and archaeology. It occurs as part of Ireland's hosting of the Sixth World Archaeological Congress in June/July 2008 at University College Dublin.

Director & Curator  
Ian Russell

in collaboration with:

Niall Bergin, Supervisor,  
Kilmainham Gaol

Gabriel Cooney, Professor,  
School of Archaeology, UCD

Ruth Ferguson, Curator,  
Newman House, UCD

Christina Kennedy, Senior Curator,  
Irish Museum of Modern Art

Jerome O Drisceoil, Director,  
Green On Red Gallery

**Chronoscope**  
Newman House  
85-86 St Stephen's Green  
13 June - 2 July

new works by

Alice Maher | Bea McMahon | Dennis McNulty  
Paul Mosse | Niamh O'Malley | Nigel Rolfe

**Glass House Stone**  
Health Sciences  
Gallery  
University College  
Dublin  
30 June - 31 July

featuring works by

Adam Burthom | Andrew Burton | Gerard Byrne  
Fiona Coffey | Dorothy Cross | Tom Fitzgerald  
Bárbara Fluxá | Mark Garry | Niamh Harte  
Sean Hillen | Áine Ivers | Caroline McCarthy  
Denis O'Connor | Aaron Watson

**The You That Is In It**  
Irish Museum of  
Modern Art  
Royal Hospital  
Kilmainham  
1 July - 16 November

a new commission by

Fiona Hallinan & Caoimhín Ó Raghallaigh

**Cronascóip**  
Teach Newman  
85-86 Faiche Stiabhna  
13 Meitheamh - 2 Iúil

úr-shaothair le

**Gloine Teach Cloch**  
Gailearaí na  
nEolaíochtaí Sláinte  
An Coláiste Ollscoile,  
Baile Átha Cliath  
30 Meitheamh - 31 Iúil

saothair le

**The You That Is In It**  
Músaem Nua-Ealaíne  
na hÉireann  
Ospidéal Ríoga  
Cill Mhaighneann  
1 Iúil - 16 Samhain

coimisiún úr le

Stiúrthóir agus Coimeádaí  
Ian Russell

i gcomhar le:

Niall Bergin, Maoirseoir,  
Príosún Chill Mhaighneann

Gabriel Cooney, Ollamh,  
Scoil na Seandálaíochta, UCD

Ruth Ferguson, Coimeádaí,  
Teach Newman, UCD

Christina Kennedy, Coimeádaí Sinsearach,  
Músaem Nua-Ealaíne na hÉireann

Jerome O Drisceoil, Stiúrthóir,  
Gailearaí Glas Ar Rua

All events are free and open to the public.

Further information and contact details are  
available at: <http://www.amexhibition.com>

Saorchead isteach ag an bpobal.

Tuilleadh eolais agus sonraí teagmhála le  
fáil ag: <http://www.amexhibition.com>





**You have been robbed.**

# History Lost

A multi-media exhibition about  
the illicit trade of antiquities

The **Sixth World Archaeological Congress** and  
the **Hellenic Foundation for Culture** invite you to view

## History Lost

A multimedia exhibition about  
the illicit trade of antiquities

The chq building, IFSC, Docklands Dublin 1

DURATION OF THE EXHIBITION: JULY 1 - 23, 2008

Opening hours

Monday-Friday 10am-7pm, Saturday 10am-6pm, Sunday 12noon-6pm

*The exhibition is being held with the support of  
the Embassy of Greece in Dublin and the Embassy of the Republic of Cyprus in Dublin*

Organised by:



HELLENIC FOUNDATION FOR CULTURE

Under the auspices of:

**WAC-6**

SIXTH WORLD ARCHAEOLOGICAL CONGRESS  
DUBLIN - IRELAND

Created by:



In association with:



37th EPHORATE  
OF PREHISTORIC AND  
CLASSICAL ANTIQUITIES  
CORINTH



With the support of:







ember productions present

# SCORING THE STONE

featuring

diane o'keeffe

crux vocal ensemble

produced & directed by

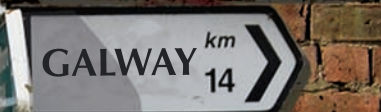
lou kennedy & colm ó foghlú

the o'kane film centre, u.c.d.

july 3rd & 4th - 12.30,13.30&14.30



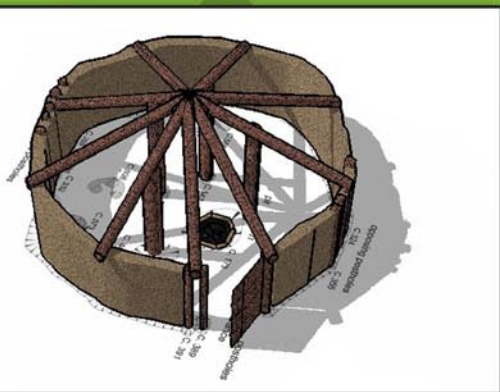
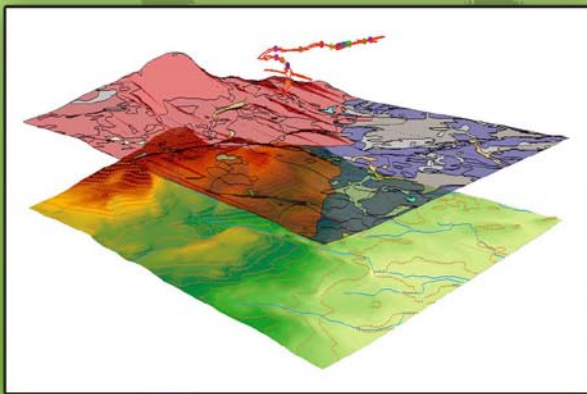
# EXPLORE OUR EXPERTISE



[www.headlandarchaeology.com](http://www.headlandarchaeology.com)



# Eachtra Archaeological Projects



Pre-planning consultancy

Survey

Excavation

Environmental analysis

Heritage media

GIS data management, analysis and mapping

3D reconstruction

Maritime archaeology

Research frameworks

Ballycurreen Ind. Est., Kinsale Road, Cork, Ireland  
Tel. 021 491 58 50 | [www.eachtra.ie](http://www.eachtra.ie) | [info@eachtra.ie](mailto:info@eachtra.ie)  
Galway Office: [galway@eachtra.ie](mailto:galway@eachtra.ie) | Kerry Office: [tralee@eachtra.ie](mailto:tralee@eachtra.ie)

# Rafter Radiocarbon dating services and Stable Isotope science

Our isotope services help you unlock the answers to archaeological, ecological and environmental history. Whether you seek knowledge of “a moment in time” from radiocarbon dating, or “inside knowledge” of isotope processes, Rafter Radiocarbon and GNS Science can provide the answers.

- Free consultancy services
- Prompt 8 week reporting times and 3 week express services
- Ability to handle a full range of sample sizes
- Bone C and N analysis (%C,%N, $\delta^{13}\text{C}$ , $\delta^{15}\text{N}$ , C:N)
- X-ray diffraction for shells
- Calibration assistance

## SPECIAL OFFER TO WAC-6 PARTICIPANTS: CONTACT US AND MENTION THIS AD TO OBTAIN A 10% DISCOUNT ON RADIOCARBON ANALYSIS

Email us to take advantage of Rafter Radiocarbon discounts to WAC-6. Visit our websites to learn more about our services and GNS Science.

\* for services booked up to June 30, 2009.

### WEB

[www.rafterradiocarbon.co.nz](http://www.rafterradiocarbon.co.nz)

[www.gns.cri.nz/nic/stableisotopes](http://www.gns.cri.nz/nic/stableisotopes)

### EMAIL

[radiocarbon@gns.cri.nz](mailto:radiocarbon@gns.cri.nz)

[stableisotopes@gns.cri.nz](mailto:stableisotopes@gns.cri.nz)



National Isotope Centre 30 Gracefield Road, Lower Hutt 5010, PO Box 31312, Lower Hutt 5040, New Zealand T +64-4-570 1444 :: F +64-4-570 4657



Cultural heritage component of EIA / SEA's  
Archaeological testing, monitoring and excavation  
Post-excavation and publication  
Architectural survey and recording  
GPS/EDM surveying  
CPD course provider

**Winner of several high profile awards**  
**Wide experience in major infrastructural projects**  
**Major employer throughout Ireland**



Archaeogeophysical  
investigations



Underwater archaeology

Dublin  
+353 1 2968190

email: [info@crds.ie](mailto:info@crds.ie)  
[www.crds.ie](http://www.crds.ie)

Meath  
+353 1 8414489

ARE YOU READY FOR SOMETHING DIFFERENT?

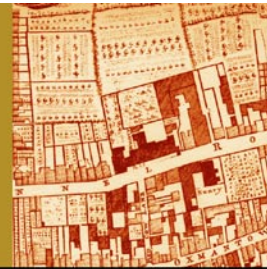
[www.irisharchaeology.net](http://www.irisharchaeology.net)

or visit our stand in the concourse  
area of the Newman Building

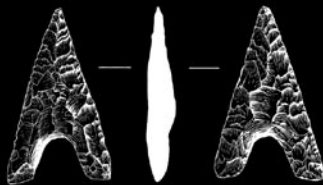




**Archaeological**  
Development Services Limited  
**INSTAR Grant Recipient 2008**



Archaeological and heritage management  
Environmental analysis  
Geophysical survey and interpretation  
Topographic survey/Geomatics  
Historic building survey  
Archaeological testing, monitoring  
and excavation  
Archaeological site and impact assessments  
Historical research service  
Post-excavation services including  
processing, analysis, write up  
and publication



110 Amiens Street, Dublin 1  
t +353 (1) 8849114 f +353 (1) 8849222 e [adsdublin@adsireland.ie](mailto:adsdublin@adsireland.ie)  
[www.adsireland.ie](http://www.adsireland.ie)

Westlink Enterprise Centre, 30-50 Distillery Street, Belfast, BT12 5BJ  
t +44 (28) 90 963500 f +44 (28) 90 312612 e [adsni@adsireland.ie](mailto:adsni@adsireland.ie)

Unit D, Kells Business Park, Cavan Road, Kells, Co. Meath  
t +353 (46) 9241604 f +353 (46) 9247572 e [adskells@adsireland.ie](mailto:adskells@adsireland.ie)

Office Unit 6, Pro-Tek House, Finisklin Business Park, Sligo  
t +353 (71) 9110070 f +353 (71) 9161012 e [adssligo@adsireland.ie](mailto:adssligo@adsireland.ie)





Membership Application

# WAC

Founded 1986

## Support for Economically Disadvantaged Countries

WAC promotes Indigenous archaeology and the participation of archaeologists from economically disadvantaged countries. Donations in support of specific programs are much appreciated. Our current programs include:

- Archaeologists without Borders.
- Global Libraries.
- Travel support for scholars from economically disadvantaged countries.
- Travel support for Indigenous members.

We also invite individuals and organizations to sponsor the membership of people or institutions from economically disadvantaged countries (see application form).

## WAC International Congresses

WAC holds a major International Congress every four years to promote: the conservation and preservation of archaeological sites; the exchange of results of archaeological research; the empowerment and support of Indigenous groups and First Nations peoples; and professional training and public education for disadvantaged nations, groups and communities. Regular features of Congress programs include policy topics such as the international traffic of antiquities, looting and protecting sites, dam construction and site protection, and public education about archaeology. WAC Congress participation is open to both members and non-members. Patrons for past Congresses include Prince Charles, Harriet Fulbright and Nelson Mandela.

WAC Inter-Congresses are held in the four-year period between the major International Congresses, and are based on particular themes or issues. Recent Inter-Congresses include:

- Cultural Landscapes (Newcastle, United Kingdom).
- Repatriation (Canberra, Australia).
- The Uses and Abuses of Archaeology for Indigenous Peoples (Auckland, New Zealand).
- Kyosei-no-koukogaku: Coexistence in the Past – Dialogues in the Present (Osaka, Japan).

Specific photos are published courtesy of the Barunga, Wugularr and Ngadjuri Aboriginal communities.

## World Archaeological Congress

[www.worldarchaeologicalcongress.org](http://www.worldarchaeologicalcongress.org)



## More Information

Die Information in dieser Brochure kann man auf der WAC Webseite in Deutsch und einer Anzahl anderer Sprachen lesen.

L'information contenue dans cette brochure est disponible en français et dans d'autres langues sur le site web du Congrès mondial de l'archéologie.

As informações constantes nesta brochura estão disponíveis em Português e diversas outras línguas, no sítio internet do WAC.

このパンフレットの情報は、WACウェブサイト、日本語やその他の言語でご覧になれます。

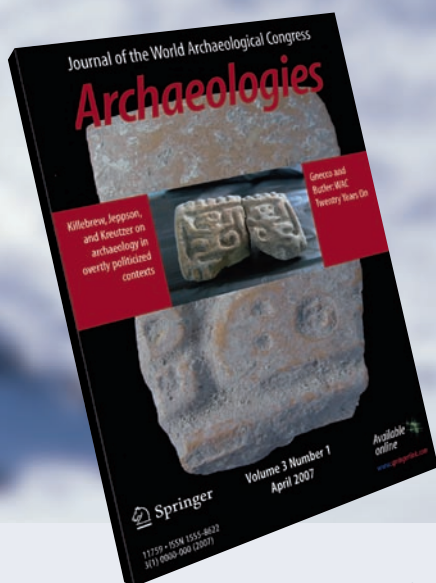
Informacja zamieszczona w tej broszurze jest dostępna w języku polskim i w wielu innych językach na stronie internetowej WAC.

La información de este folleto está también disponible en la página web del WAC en español y en otras lenguas.

[www.worldarchaeologicalcongress.org](http://www.worldarchaeologicalcongress.org)

Join our email list: [wac@flinders.edu.au](mailto:wac@flinders.edu.au)





# Don't YOU want to know

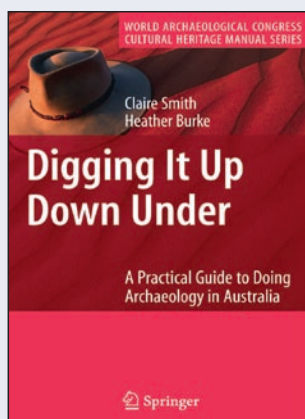
when the next issue of  
**Archaeologies** is published online?

Online access to **Archaeologies**, Journal of the World Archaeological Congress, is provided as a member benefit to WAC members.

**Sign up for the Table  
of Contents Alerts for  
Archaeologies**

Please also drop by to get an update on the forthcoming volumes in the Book Series: **World Archaeological Congress Cultural Heritage Manual Series!**

The first volume in the series will be available in soft cover:



## **Digging It Up Down Under**

**A Practical Guide to Doing Archaeology in  
Australia**

**Claire Smith and Heather Burke**

First in a practical series of manuals – each  
targeted to a specific region of the world

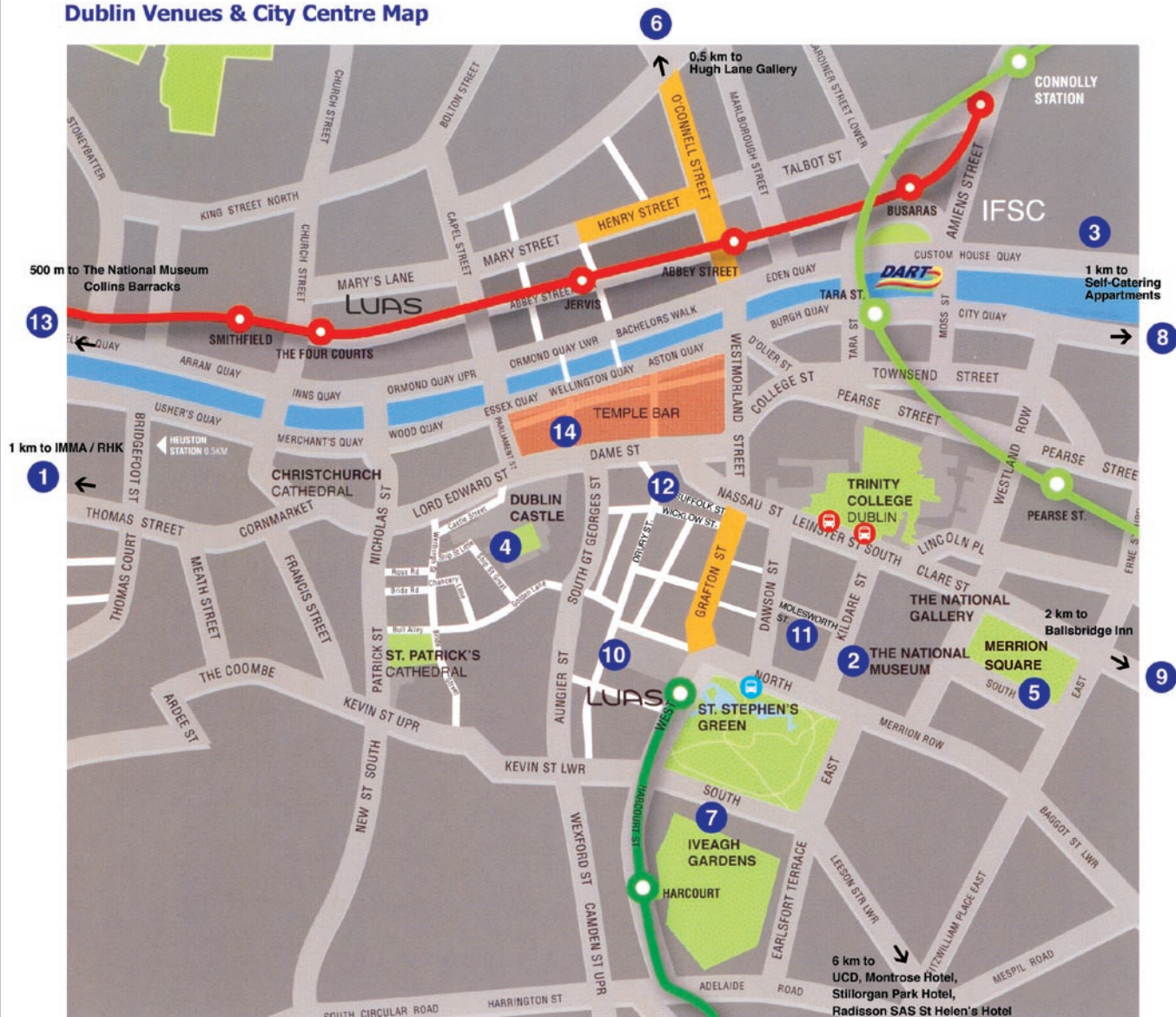
---

**Visit the Springer stand and take advantage of our  
20% conference discount on our books!**

---



## Dublin Venues & City Centre Map



1. Royal Hospital Kilmainham / IMMA (state reception Monday evening)
2. National Museum of Ireland (Tuesday evening reception)
3. chq (Tuesday evening reception)
4. Chester Beatty Library (Tuesday evening reception)
5. Royal Society of Antiquaries of Ireland (Tuesday evening reception)
6. Hugh Lane Gallery (Tuesday evening reception)
7. Newman House
8. Home from Home Self Catering Apartments
9. Ballsbridge Inn
10. Mercer Court Accommodation
11. Buswell's Hotel
12. Mid-Congress Dublin Walking Tours meeting point at tourist information office

13. The National Museum Collins Barracks

14. Temple Bar, cultural centre

Bus stops for UCD (2, 3, 10, 17, 46A, 46C, 46D, 46E, 58, 58C, 58X, 84, 84X, 116, 15X, 25X, 27X, 32X, 37X, 39X, 41X, 46X, 49X, 50X, 51X, 65X, 66X, 67X, 70X, 77X)

Disembarking point for busses from UCD (2, 3, 10, 17, 46A, 46C, 46D, 46E, 58, 58C, 58X, 84, 84X, 116, 15X, 25X, 27X, 32X, 37X, 39X, 41X, 46X, 49X, 50X, 51X, 65X, 66X, 67X, 70X, 77X)

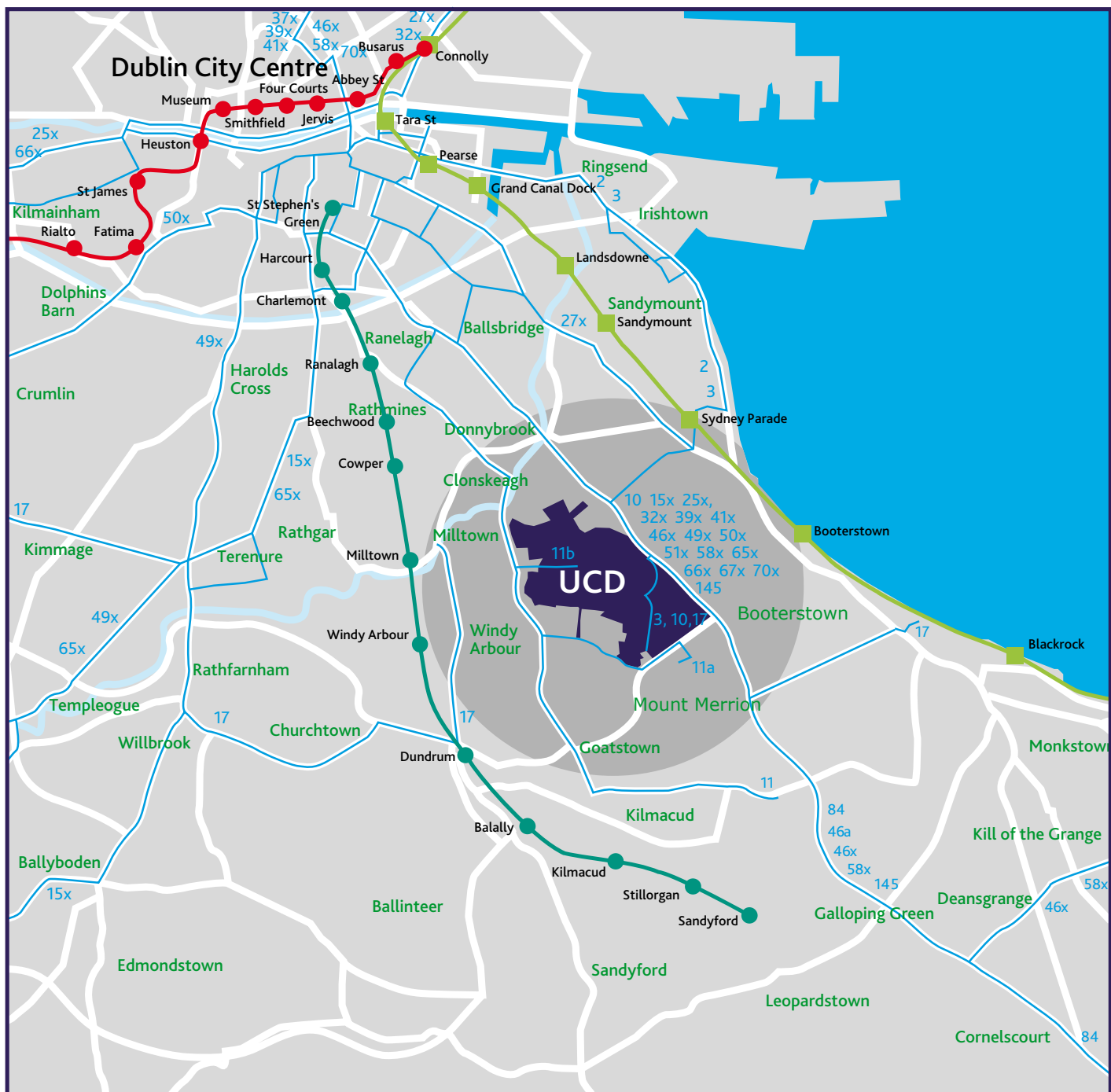
**LUAS** Tram system, Red Line and Green Line, does not service UCD

Suburban rail, connects to bus no. 17 at Blackrock station

Main Shopping Areas

Public Parks





## TRANSPORT LINKS

The Belfield campus is located 4 km from Dublin city centre on the N11. With thousands of students and staff attending the university every day, there are many transport options from the various parts of the city, and indeed the whole country. Many bus routes service Belfield (mostly along the N11 quality bus corridor), taking you to and from the city, local suburbs and beyond. A dedicated bus also travels to the local DART station, which will take you north to Howth and Malahide and south to Greystones. The DART interconnects with the Red Luas line at Connolly Station/Busaras, which in turn connects with Heuston Station.

You'll find information and timetables on the following bus routes at [www.dublinbus.ie](http://www.dublinbus.ie).

12 | 3 | 10 | 10A | 11 | 11B | 15X | 17 | 25X | 27X | 32X | 37X | 39B | 39X | 41X | 46A | 46B | 46D | 46N | 46X | 49X | 50X | 58X | 65X | 66X | 70X | 77X | 84X | 145 |

Students holding a Student Travel Card ([www.studenttravelcard.ie/travel-card](http://www.studenttravelcard.ie/travel-card)) can save money on their transport costs (bus, DART, LUAS and train). UCD students can apply for this on campus or from Dublin Bus or Iarnród Éireann.



## UCD Campus Location Map

- Walking distance
- Dublin Bus routes serving UCD campus
- Green Luas line and stations (tram)
- Red Luas line and stations (tram)
- DART line and stations (light rail)
- Main roads

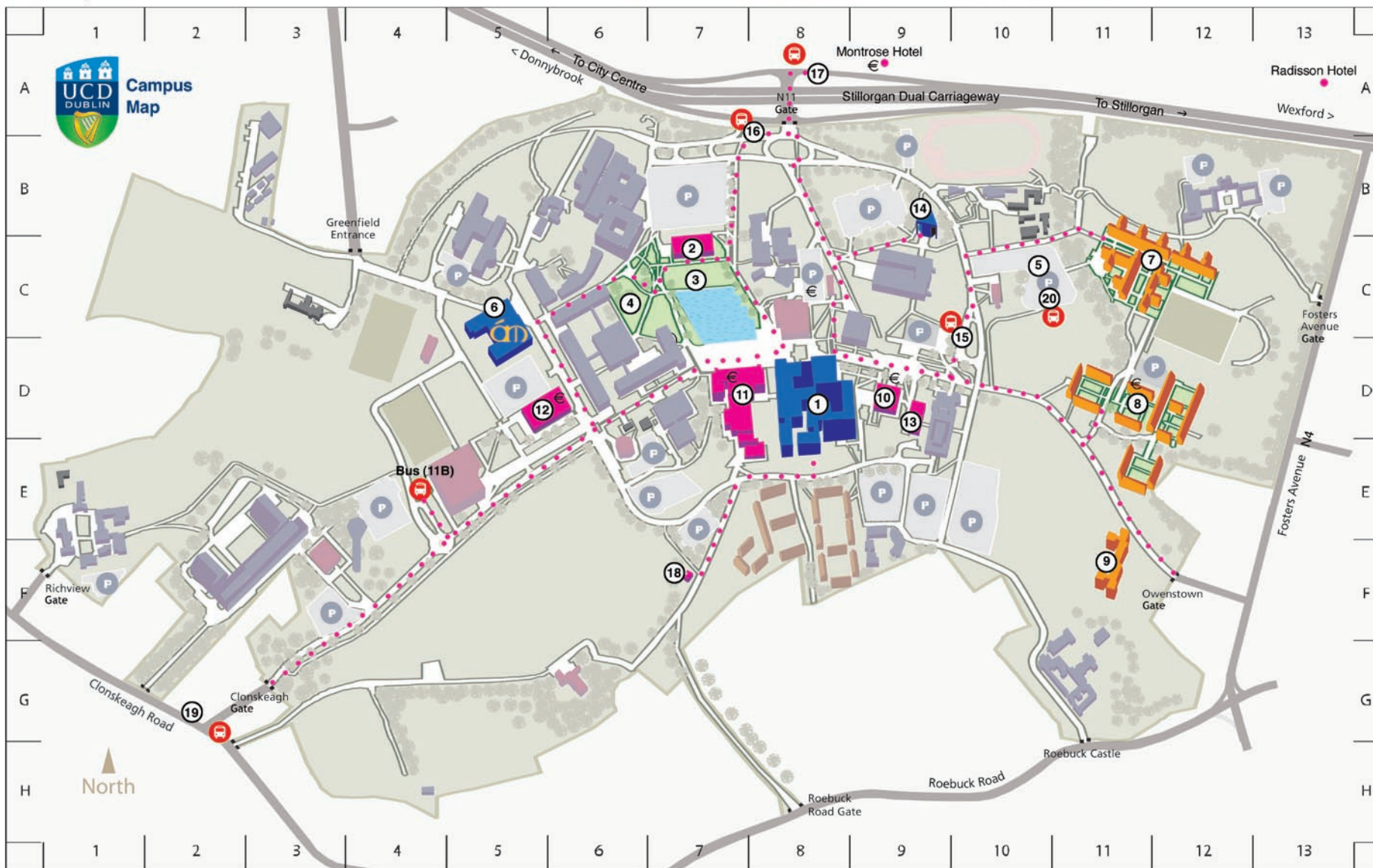


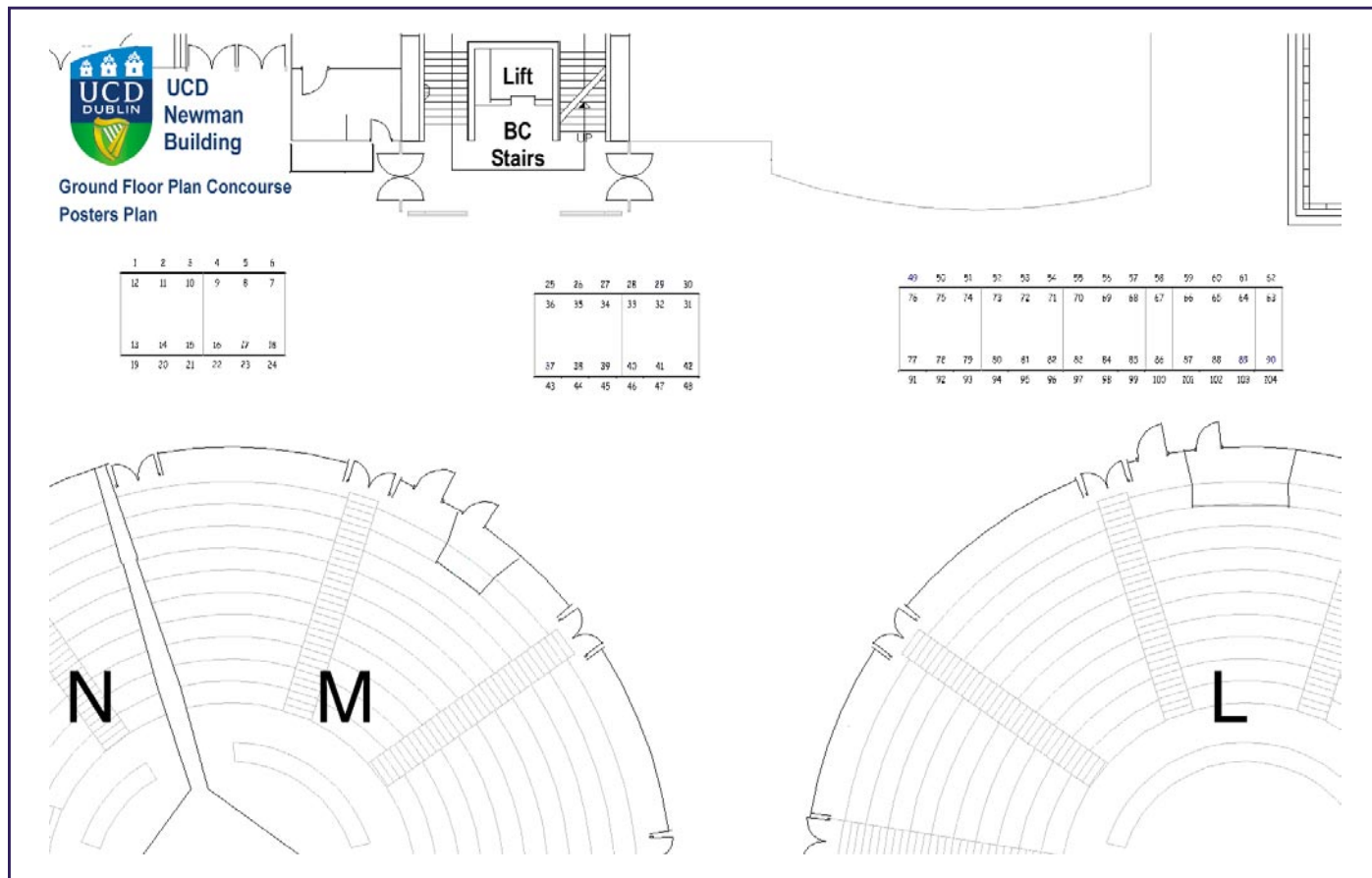
1. Newman Building (parallel sessions, exhibition, AV room, tea/coffee, lunch pickup)
2. O'Reilly Hall (registration, plenary sessions, welcome reception, congress dinner & party)
3. Marquee (lunch pickup and seating)
4. WAC Fringe
5. Coaching Car Park (all congress coaching departs from here)
6. AM Exhibitions in the Health Sciences Gallery (Ábhar agus Meon contemporary art & archaeology exhibition - Glass House Stone)
7. Glenomena Apartments
8. Merville Apartments

9. Roebuck Apartments
10. Main Restaurant (UCD campus accommodation breakfast)
11. Library
12. Student Union & Centre Bar
13. Student Bar
14. Clinton Auditorium (G11)
15. Bus stop on campus into city centre (2, 3, 10, 17)
16. Bus stop on Stillorgan dual carriageway (aircoach pickup point, 46A, 46C, 46D, 46E, 58, 58C, 58X, 84, 84X, 116, 117, 118, 746)

17. Aircoach drop off point outside the Montrose Hotel, bus stop from city centre to UCD (46A, 46C, 46D, 46E, 58, 58C, 58X, 84, 84X, 116, 117, 118, 746)
18. O'Kane Centre for Film Studies
19. Bus stop on Clonskeagh Road into city centre (11, 11A, 11B)
20. Bus stop for express busses across city, (15X, 25X, 27X, 32X, 37X, 39X, 41X, 46X, 49X, 50X, 51X, 65X, 66X, 67X, 70X, 77X)

€ ATM Cash Point





Each poster will be displayed for a two day period on either Monday 30 June-Tuesday 1 July or on Thursday 3 July-Friday 4 July. Poster authors will be present at their posters for a 30 minute period during one of the coffee/tea breaks during the two days over which their posters are displayed. Please consult the Poster Timetable in this programme or the conference website for details display and attendance times.

Many of the posters on display throughout the Congress are also available to view on the conference website. We invite you to revisit posters online after the Congress and ask that you bring them to the attention of colleagues that may find them of interest.





## UCD Newman Building

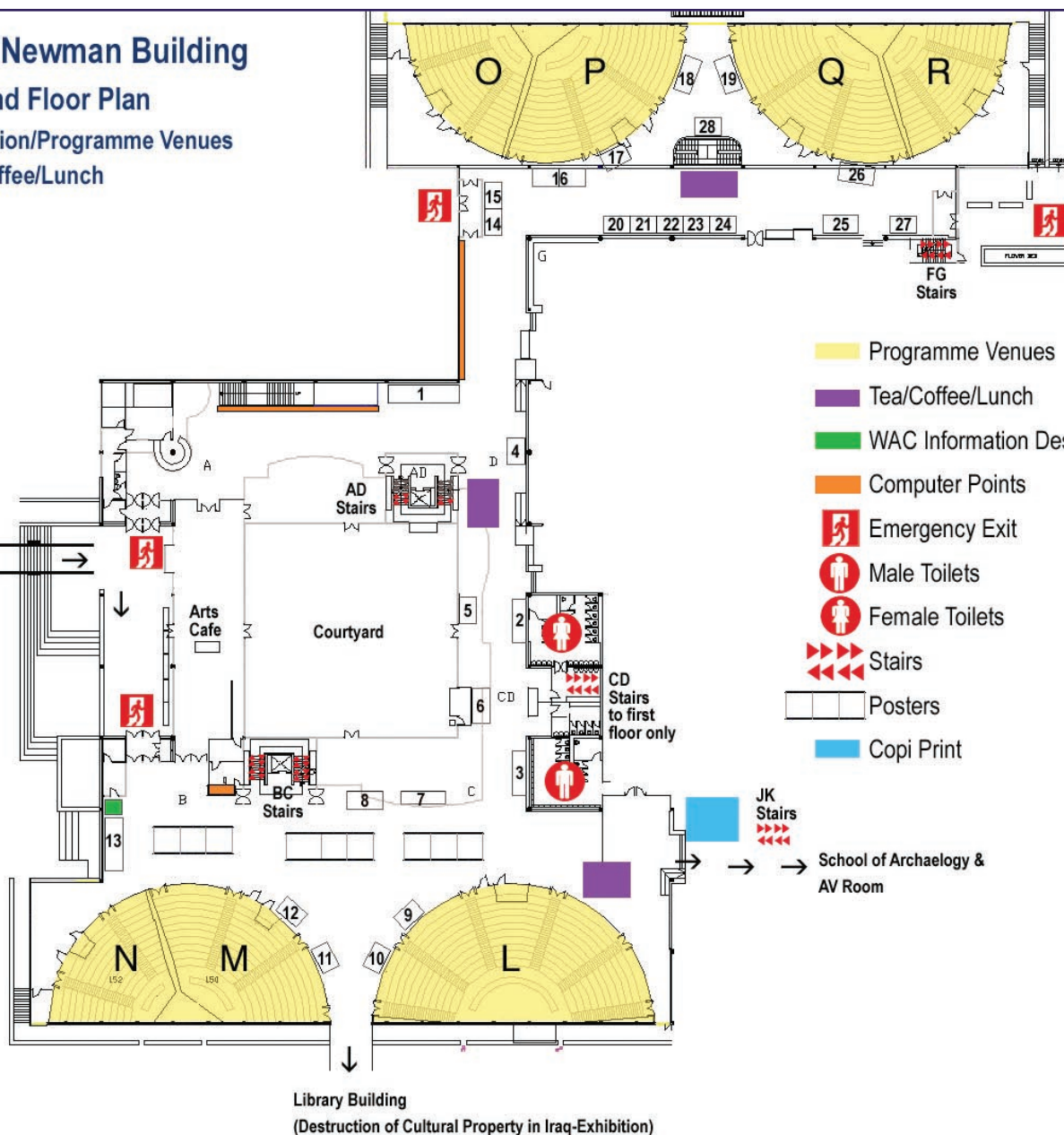
### Ground Floor Plan

Exhibition/Programme Venues

Tea/Coffee/Lunch

Main Entrance to  
Newman Building →

O'Reilly Hall ↙



### Sponsors Stands:

1. Dept of Environment, Heritage & Local Government
2. Heritage Council
3. National Roads Authority (NRA)
4. Dept of Agriculture, Fisheries and Food
5. Environment & Heritage Service
6. Humanities Institute of Ireland, UCD

### Exhibitors Stands:

7. CRDS
8. Rafter Radiocarbon/GNS
9. Oxfam Ireland
10. Aluka
11. Faculty of Archaeology Leiden University
12. Archaeolingua Publications
13. Archaeology Ireland (Worldwellbooks.com)
14. Boydell & Brewer Ltd
15. Wiley-Blackwell
16. Archaeopress
17. Intrasis
18. Oxford University Press
19. Antiquity
20. Maney Publishing
21. Informa UK - Routledge
22. Cambridge Press
23. Barington Instruments
24. UCD Campus Bookstore
25. Springer
26. Berg Publishers/Left Coast Press
27. Archaeological Institute of America



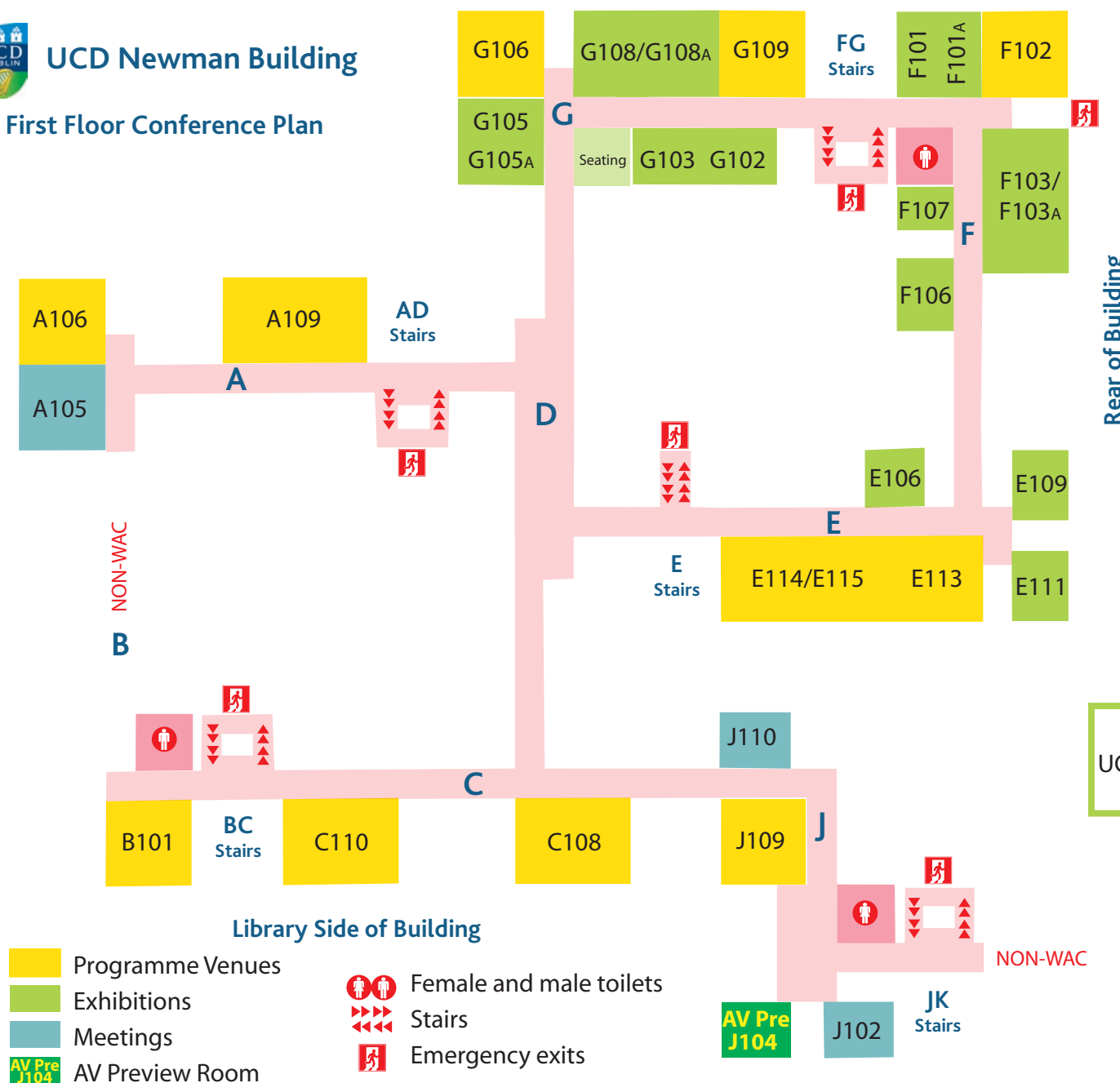
# UCD Newman Building

## First Floor Conference Plan

### Restaurant Side of Building

Front of Building

Rear of Building



## Archaeological and Art Exhibitions

(Please note there are further Exhibitions in other locations)

- E106** *Personal Histories Films* - Pamala J. Smith
- E109** UCD School of Irish, Celtic Studies, Irish Folklore & Linguistics
- E111** The Irish Traditional Music Archive
- F101** *UCD Sculptural Commission* - Kevin O'Dwyer
- F101A** *A Experimental Installation of unfinished process* - Cordula Hansen
- F103/F103A** *Site Specifics / Visualizing Archaeologies*
- F106** *In Transit & Excavating Georgia* - Excavating Contemporary Culture
- F107** *Excavating Francis Bacon's Studio*
- G102** *From the Mesolithic to the New World* - Ulster Museum
- G103** 1) *Edercloon (N4 Dromod-Rooskey)*  
2) *NRA Database of Excavated Sites National Roads Authority* - National Roads Authority
- G105** *Paintings of the impact mankind on the Irish landscape* - The Environment and Heritage Service, Northern Ireland
- G105A** *Hidden Worlds* - J. Boreham & H. Lewis
- G108/G108A** 1) *Searching for the Lost Kingdom of Mide*  
2) *Migrants, Mariners and Merchants*  
3) *Life and Death in Monaghan* - National Roads Authority
- K216** *Questioning ... A new collection: Method, Interpretation, Presentation* - UCD School of Classics Museum

K216

UCD School of Classics Museum  
is on the Second Floor



## Your Programme Outline and Personal Session Planner

Time	Sun 29 <sup>th</sup> June	Mon 30 <sup>th</sup> June	Tues 1 <sup>st</sup> July	Wed 2 <sup>nd</sup> July	Thurs 3 <sup>rd</sup> July	Fri 4 <sup>th</sup> July	Time	Sat 5 <sup>th</sup> July
<b>08:30 – 10:30</b>		Sessions <div></div>	Sessions <div></div>	<b>Mid-Congress Tours</b>	Sessions <div></div>	Sessions <div></div>	<b>08:30 – 10:30</b>	Workshops & special sessions
<b>10:30 – 11:00</b>		Tea/Coffee & poster viewing	Tea/Coffee & poster viewing		Tea/Coffee & poster viewing	Tea/Coffee & poster viewing	<b>10:30 – 11:00</b>	
<b>11:00 – 13:00</b>		Sessions <div></div>	Sessions <div></div>		Sessions <div></div>	Sessions <div></div>	<b>11:00 – 13:00</b>	
<b>13:00 – 14:00</b>		Lunch	Lunch		Lunch	Lunch	<b>13:00 – 14:00</b>	
<b>14:00 – 15:30</b>	<b>Registration</b>	<b>Peter Ucko Memorial Lecture</b>	<b>Plenary Sessions &amp; Panels</b>	Post-Tour Receptions	<b>Plenary Sessions &amp; Panels</b>	Sessions <div></div>	<b>14:00 – 15:30</b>	Post-Congress Tours begin
<b>15:30 – 16:00</b>		Tea/Coffee & poster viewing	Tea/Coffee & poster viewing		Tea/Coffee & poster viewing		<b>15:30 – 16:00</b>	
<b>16:00 – 18:00</b>		Sessions <div></div>	Sessions <div></div>		Sessions <div></div>	Tea/Coffee	<b>16:00 – 18:00</b>	
	Evening: Opening Ceremony & Welcome Reception	Evening: State Reception in Royal Hospital Kilmainham	Evening: Receptions & other events		Evening: Congress Dinner & Party	<b>Plenary from 16:30</b>		

Please enter Session venues of your choice using the *Congress Themes and Venues at a Glance* as a guide