



School of Geography, Planning and Environmental Policy

BA Geography

STAGE 1 PROGRAMME 2011- 2012



Students of Geography can take up to 20 credits of Geography at stage 1. Ten credits must be passed in order to progress to stage 2. The School offers Geography students with three alternative pathways through the BA Programme at stage 2:

- **Geography as a minor subject** (40 credits)
- **Geography as a joint major subject** (50 credits)
- **Geography as a major subject** (60 credits)

The subject is concerned with understanding the world around us, and the relationships between the physical world and humanity. Literally, the word derives from the Greek words for "Earth" and "to write" (as in "to describe"). The aim of the Geography programme at UCD is to enable you to develop observational and descriptive skills at Stage 1, and to develop research skills, as well as an analytical and critical geographical eye, at Stage 2. [Geography is an excellent choice with a variety of other subjects right across the BA and BSocSc programmes, and because of the diversity of topics covered, many students have found particular modules of interest as elective subjects.](#)

All geographers are environmentalists because it is the study of the environment that provides coherence to the discipline. Geographers observe the patterns that abound across the earth, questioning why certain things occur in one place and not another. Have you ever wondered why Ireland is not as prone to earthquakes as the countries on the rim of the Pacific Ocean? Do you know why wine and olives grow in the Mediterranean and not in Ireland? Or have you considered why certain religious, ethnic or social groups tend to congregate together in particular places rather than being spread out around the city? If you have, then you are already on the way to becoming a geographer and if not, then we will train you to observe and interrogate these and other physical and human spatial phenomena.

As well as understanding the diversity of the world around us, what other benefits are there to doing a geography degree? In recent years, our graduates have found that the skills they learnt in the geography programme have enabled them to excel in a range of activities within Ireland and abroad. They work as teachers at primary and secondary level; as researchers with government agencies and departments such as Teagasc, the Marine Institute, the Department of the Environment and Department of Finance; as consultants with private firms including Deloitte & Touche, Arthur Andersen, Ulster Bank and ACC Bank; as aid workers in developing countries, including Niger; as marketing executives; as GIS specialists; as planners and local government officials; as researchers and lecturers in UCD, University of Bristol,

Louisiana State University, University of Wisconsin and many other third level institutions. The list is endless! Geographers end up in varied careers because of the wide range of generic skills such as team working, interpersonal and communication, IT, numeracy and analytical skills and more subject-specific expertise, such as cartography, that the degree equips you with. Most employers are delighted to have our graduates on their staff.

The Stage 1 programme in Geography at UCD sets the scene for what is developed at Stage 2. It is interesting and challenging, focusing on both human and physical environments. It is also wide-ranging given that the programme mixes large group lectures and on-line classes with smaller tutorials. We do not assume that any student entering the programme has studied geography at second level. Energy, enthusiasm and a desire to learn more about the places in which we live, work and play are much more important attributes.

Given recent concerns globally, regionally and nationally about important issues such as global warming, development in Africa, multiculturalism, urban change and other environmental issues, Stage 1 Geography provides you with an excellent introduction to a range of contemporary and historical issues.

PROGRAMME

The programme is comprehensive and varied depending on whether Geography is chosen as a major subject (60 credits), a joint major subject (50 credits) or a minor subject (40 credits). **To progress to Stage 2 in Geography, students must have successfully completed two Geography modules or 10 credits of Geography at Stage 1.** The programme is described in more detail overleaf, but can be described in general as follows:

| Geography as a major | Geography as a joint major | Geography as a minor |
|---|---|--|
| <p>Stage 1</p> <p>Students take Modules up to a total of 20 credits in Geography and 40 credits from other Modules available to Arts students.</p> | | |
| <p>Stage 2</p> <p>Students must accumulate a total of 120 credits to complete Stage 2. 60 Credits must be taken from the Geography programme, but it is possible to also take your electives from within the subject.</p> | <p>Stage 2</p> <p>Students must accumulate a total of 120 credits to complete Stage 2. 50 Credits must be taken from the Geography programme, but it is possible to also take your electives from within the subject.</p> <p>This stage will take at least two years.</p> | <p>Stage 2</p> <p>Students must accumulate a total of 120 credits to complete Stage 2. A minimum of 40 Credits must be taken from the Geography programme.</p> <p>This stage will take at least two years.</p> |

| | | |
|--|--|--|
| This stage will take at least two years. | | |
|--|--|--|

ACADEMIC YEAR 2011/2012

| Semester 1 | | |
|--------------------------|--|-----------------|
| Teaching Term 1 | Monday 12 Sept – Friday 2 Dec ¹ | 12 Weeks |
| Revision | Saturday 3 Dec – Friday 9 Dec | 1 Week |
| Examinations | Saturday 10 Dec – Wednesday 21 Dec | 10 Working days |
| Semester 2 | | |
| Teaching Term 2a | Monday 16 Jan – Friday 2 Mar | 7 Weeks |
| Fieldwork / Study Period | Monday 5 Mar – Sunday 18 Mar ² | 2 Weeks |
| Teaching Term 2b | Monday 19 Mar – Friday 20 April ³ | 5 Weeks |
| Revision | Monday 23 April – Sunday 29 April | 1 week |
| Examinations | Monday 30 April – Saturday 12 May ⁴ | 11 Working Days |
| | | |

¹ October Bank Holiday: Monday, 31 October 2011

² St Patrick's Day: Saturday, 17 March 2012

³ Good Friday, 6 April 2012; Easter Sunday, 8 April 2012; Easter Monday, Monday 9 April 2012

⁴ May Bank Holiday: Monday, 7 May 2012

LECTURES

Each lecture begins on the hour and lasts for 50 minutes. Students arriving late and leaving early cause significant disruption both to students and the lecturer. We therefore ask you to ensure that you are punctual. **Attendance at lectures is compulsory** and the penalties for failing to attend are severe. Lectures form the framework for all of your learning and you are expected to build, through your own readings, on the topics covered in lectures. It is recommended that you spend about 2 hours reading either in preparation or as a re-cap for each lecture. Geography is also a visual subject and the images that underpin lectures are just as important to understanding as the printed word. Attendance is critical; it is not sufficient to obtain notes from somebody else.



All geography modules will be assessed differently. Your module coordinators will give you full details on the assessment strategy for each module. Module descriptors are also available online at: http://www.ucd.ie/students/course_search.htm

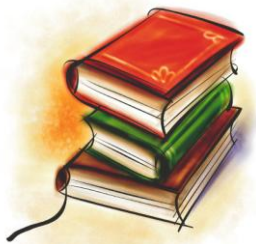
TUTORIALS

Tutorials are small group classes that meet on a weekly basis under the guidance of a tutor. They are complementary to lecture modules and are essential to ensure understanding of the topics covered in large lectures but also to develop a range of analytical, critical and other practical skills. **Tutorials are compulsory and an attendance log will be maintained.** Registration to tutorials is through SIS web.



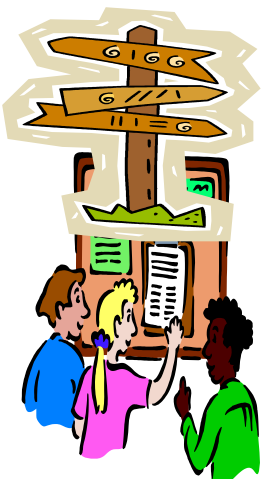
Tutorials will appear on your timetable and you will be expected to complete work as assigned by your tutor. This work may be allocated in advance of the tutorial or as a follow-up. Tutorials are **not** lectures. It is your opportunity to do the talking, to ask questions, develop and give opinions and learn both generic and subject-specific skills. Students in the past have often made life-long friends from their Stage 1 tutorial and often find that it is their favourite learning environment.

MATERIALS FOR STUDY



At the beginning of each module, you will be provided with a detailed module outline by your lecturer. This will provide all the information that you need for the module and should be your first port of call if you have any questions about it. Your outline will provide an overview of the module and will set out the learning objectives. It will provide information on reading and other learning support material (CD-rom, websites, Blackboard facilities etc.) that you will need to access. Some modules will require you to obtain core textbooks; others will indicate a range of readings that you need to obtain. Although we would advise that you familiarise yourself with the University Library in the first few days of term, your tutor will also help you find your way around the library during the first tutorial.

WHERE IS GEOGRAPHY?



The Belfield campus of the School is located in the EH corridor on the ground floor of the Newman Building. Here you will find a range of facilities including the School office, academic offices, the technicians' office, postgraduate room, seminar and tutorial rooms, the Map Library, GIS and geomorphology laboratories.

HOW DO I FIND OUT WHAT IS HAPPENING?

In the School corridor in the Newman Building, you will find a notice board dedicated to Stage 1 Geography. Any notices relevant to your lectures, tutorials or submission of assignments will be posted here. **It is your responsibility to check the notice**

boards on a regular basis. Please also check regularly the School Website www.ucd.ie/gpep for important updates.

WHAT IF I HAVE A QUESTION OTHER THAN THOSE ANSWERED BY THE NOTICEBOARD?

If your question is:



- An administrative, registration or programme-related query, please direct it to the **BA Programme Office, Ground Floor, Newman Building**.
- About the School in general, visit the **Undergraduate School Office, Room E001**.
- Academic and related to a particular module, direct it to the **module co-ordinator** listed on your module outline. It is probably easiest to bring a query to your lecturer after the lecture has finished. **Contact the module coordinator during their office hours - check contact details for staff at: <http://www.ucd.ie/gpep/staff>**

IS THERE SOMEONE I CAN SPEAK TO IF I FIND MYSELF UNABLE TO SETTLE?

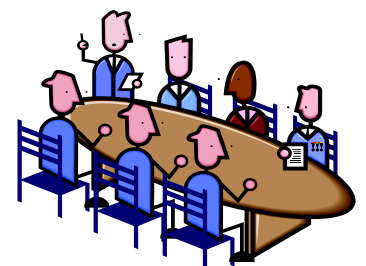
We know that students, especially at Stage 1, can sometimes find the whole experience of settling in to University totally overwhelming. If you find yourself in difficult circumstances, there is a lot of help available in UCD. The most important thing is to let us know as soon as possible when a problem arises. The first thing you should do is make an appointment to meet the **BA Director: Dr Colman Gallagher, Room H002, Phone 716 8383**.



There is an excellent **Student Advisory Service in UCD** (Kieran Moloney - Human Sciences, Room G003, Phone: 716 8366 and Aisling O'Grady – Arts, Room D001, Newman Building, Phone 716 8349) and the Students Union have a Welfare Office based in the Students Centre, Phone: 716 3112, Email: suwelfare@ucd.ie.

HOW DO STUDENTS BRING ISSUES IN THEIR CLASS TO THE ATTENTION OF STAFF?

The School of Geography, Planning and Environmental Policy operates a Staff-Student Committee. This comprises of representatives of each undergraduate class (three from Stage 1, and two from Level 2 and 3 cohorts), postgraduates and staff members. Students will have an opportunity to elect their class representatives in the first semester.

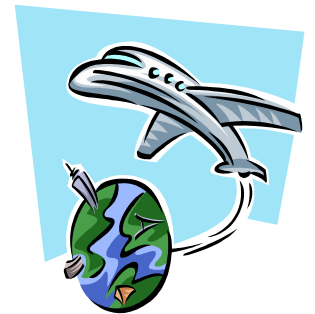


The committee discusses matters of interest and concern to the class with the Head of School and other members of the academic staff and regular meetings are held during the year. We would encourage you to get involved, as it is your voice and way of inputting into how the School is run. It is also a very worthwhile addition on your curriculum vitae when you are job-hunting!

ARE THERE OPPORTUNITIES TO STUDY ABROAD?

All Geography students are urged to consider the possibility of studying at another university abroad as part of their programme of studies at UCD. Students usually go abroad after completing their second year, and transfer from the 3 year BA (or BSocSc) to the 4 year BA (International) or BSocSc (International) Degree. After spending their year abroad, and passing at least 30 ECTS credits, they then return to complete their fourth and final year in UCD. Currently the School has a number of exchange agreements in place with European universities, including new links with Amsterdam and Liubljana, and recent students have travelled to Barcelona, Grenoble, Pisa and Berlin. A grant is available to cover travel and associated expenses. UCD also has exchange agreements with universities in Canada, USA, Australia and Japan which provides a unique chance to undertake your own independent studies at other Geography Departments, and see another part of the world at the same time.

Further information is available from the **International Office**, <http://www.ucd.ie/international/>



SCHOOL POLICIES

While we are an open and friendly School and will do our utmost to assist any student in difficulty, we do set certain standards that we expect you to meet. The most important policies of which you should be aware are:

1. Submission of assignments:

Coursework must be submitted electronically via the safe assign function on BlackBoard, no later than **3pm on the due date**. **A hard copy must be submitted within 24 hours of the electronic submission**. Your lecturer/tutor will tell you where to submit this. Coursework may of course be submitted in advance of the due date. Coursework received at any time within two weeks of the due date will be graded, but a penalty will apply. *Please see links below for policy of Late Submissions.*

2. Extension of Coursework Submission Deadline:

If you know in advance for good reason that you will be unable to complete a piece of continuous assessment, you should complete the form for **Late Submission of Assessment**, to seek an extension from the School concerned. Forms are available from the **BA Programme Office**, or at:

<http://www.ucd.ie/registry/academicsecretariat/pol.htm>

3. Extenuating Circumstances:

Extenuating circumstances are unforeseen circumstances beyond your control that either prevented you from attending an examination or submitting all or any part of any continuous assessments by the due date. Typically such unforeseen circumstances could include events like an accident, a crime, family bereavement, serious illness or other serious personal or emotional circumstances. In some instances you may have attended an examination or submitted continuous assessment but your performance may have been affected by your extenuating circumstances. The University has a procedure to consider such extenuating circumstances; please obtain, complete and return an **Extenuating Circumstances Form** to the **BA Programme Office**, or obtain from http://www.ucd.ie/acshs/forms_policy.html

4. Student Email Policy

In order to address the need for timely and efficient communication, and to provide a better service to its students, University College Dublin has instituted a policy establishing an official means of communicating with students which will be by e-mail addressed to their UCD Connect email address. Upon registration at UCD, each student is assigned a UCD Connect email account. The official email address will be maintained in each student's record, from which distribution lists are compiled. Students can arrange to have their UCD Connect account redirected to another address or service provider but students should note that it is the student's responsibility to ensure that this alternate mailbox is viable. It is recommended that students use their UCD Connect mail box.

Any official UCD e-mail sent to students will be addressed to their UCD Connect address. It is a student's responsibility to ensure time-critical e-mail is accessed, read and acted upon in a timely fashion.

We hope that you enjoy Stage One in the School of Geography, Planning and Environmental Policy.

MODULE SCHEDULE: Semester 1

Please refer to your online timetable for details of locations and times of lectures

| | | |
|----------------------------------|---|----------------------------|
| GEOG 10020 (5 Credits) | <p style="text-align: center;">Geography of Cities</p> <p>This module will introduce you to cities and their geography. It is designed as an introduction and so we will explore the city with a variety of perspectives which will include both historical and contemporary. This has the aim of developing your understanding of how various forces and processes come together to create the living entity that is a city. The focus of the module will largely, but not exclusively, be on the urban systems of Europe and North America. As you develop your knowledge and skills you will find yourself moving from description towards analysis and from a perspective the focuses on the particular to one that understands issues in their comparative context. While there will be formal lectures, an important element of this module will be group work. In these groups you will explore the main topics of the module and by working with real data you will develop your skills. These groups are the focus of assessment of the module. Extensive use is made of electronic resources, especially the UCD Blackboard environment. No special computer skills are needed, just a basic familiarity with computers and a willingness to use them.</p> | Dr Joseph Brady |
| GEOG 10080 (5 Credits) | <p style="text-align: center;">Earth Systems</p> <p>This module introduces students to the Earth, to its environmental systems and to the ways in which these systems operate and change both spatially and temporally, producing distinctive physical geographies.</p> | Dr Colman Gallagher |

Module Schedule Semester 2

| | | |
|---|---|--|
| <p>GEOG 10090 (5 Credits)</p> | <p style="text-align: center;">Contemporary Human Geography</p> <p>Contemporary Human Geography is the study of the dynamic relations between people and places. In this module, our aim is to gain an understanding of such complex processes as globalization and development, and the regional disparities in prosperity and inequality that result from these. The discussion will evolve around the three main themes of economic, political, and social actions, all of which significantly shape the spatial organization of human activities. The module will present a general overview of the discipline, provide the opportunity to develop independent critical thinking skills, and offer insight into practical skills and tools that can be applied to a wide range of research settings. Overall, Contemporary Human Geography supplies the foundation for further, more topic specific, modules that focus on the spatial analysis of political and socio-economic phenomena at later stages.</p> | <p style="text-align: center;">Dr Dieter Kogler</p> |
|---|---|--|

| | | |
|---|---|--|
| <p>GEOG 10070 (5 Credits)</p> | <p style="text-align: center;">Environmental Change and Policy</p> <p>The aim of this module is to introduce students to processes of environmental change and to explore how policy-makers have responded to these challenges. The module has three primary components: firstly, the module will examine key environmental challenges facing society at a range of spatial scales. This will introduce you to issues from global environmental issues such as climate change and biodiversity loss to more local concerns such as environmental quality, land use change and various forms of pollution. The second part of the module will consider the relationship between environment and society. This will include an exploration of the changing ways society has viewed or valued the environment and will also chart the emergence of environmentalism as a political force. The final part of this module will outline the policy response to environmental change. This part of the module will introduce students to the broad concept of sustainable development and will also provide an overview of various forms of policy instruments to address environmental challenges.</p> | <p style="text-align: center;">Dr Eoin O' Neill</p> |
|---|---|--|

IMPORTANT: The information provided in this guide is believed to be correct. However, in the event that the information in this guide conflicts with any university policy, that policy has precedence.