

How to encrypt a USB key using McAfee Encryption

Step 1

McAfee removable storage encryption will start running when you attach your USB memory key to your encrypted machine.

This feature enables you encrypt the entire USB key, which we recommend you using a minimum of 8 mixed case alpha numeric characters.

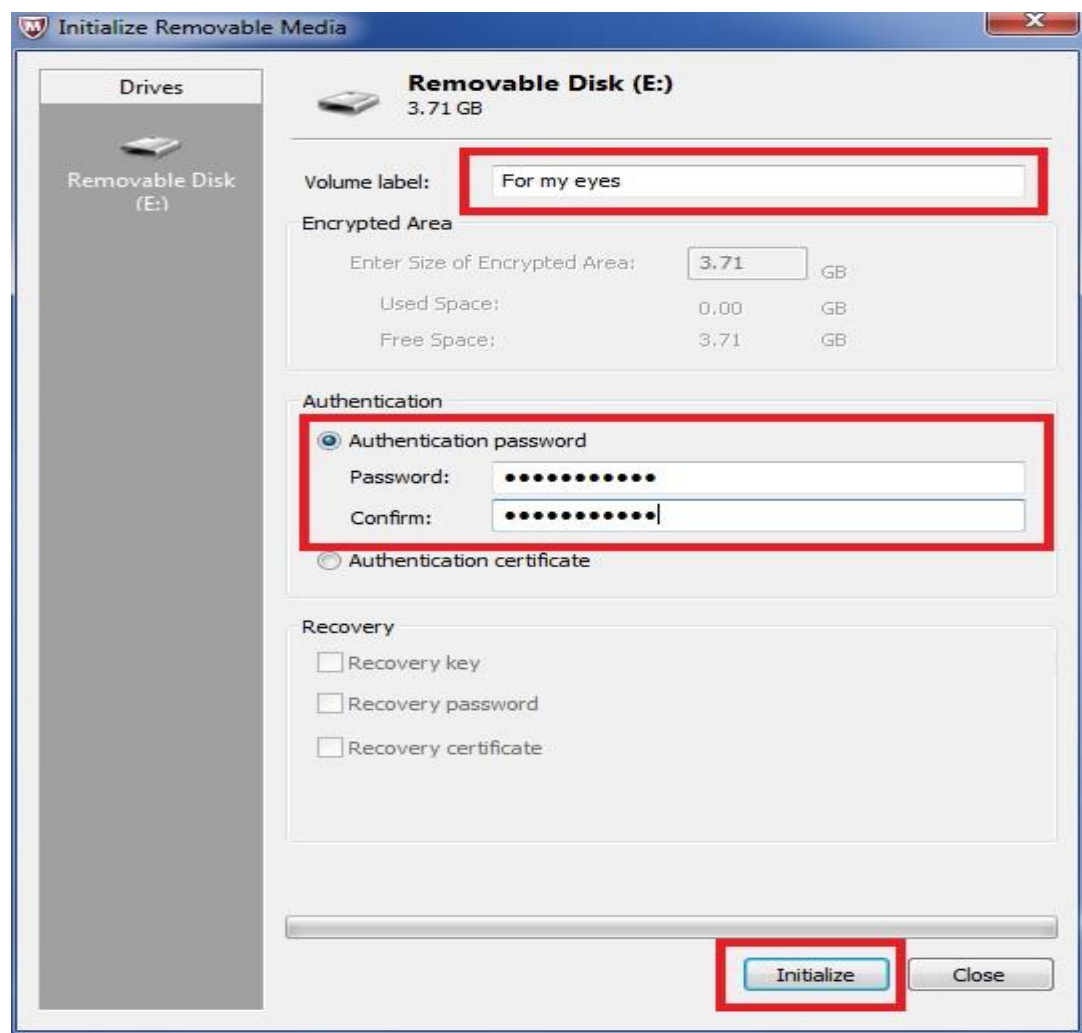
Select **Yes** to encrypt you USB memory key



Note: If you select full encryption any contents that were previously on the USB key will be wiped in the initialization process.

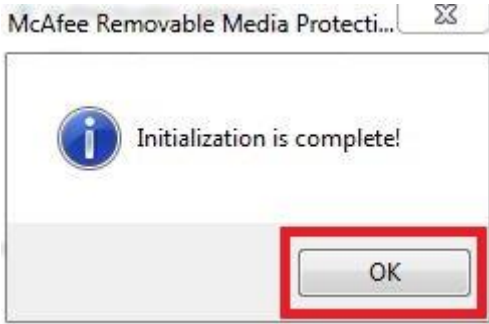
Step 2

The following will be displayed. Complete the **Volume label**, **Authentication password** and select **Initatize**



Step 3

Initialization will be confirmed. Select **OK**



Your USB key is now encrypted, you can now save your files to this encrypted key.

Opening your files on the USB key

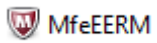
Step 1

Select the USB key drive in My Computer



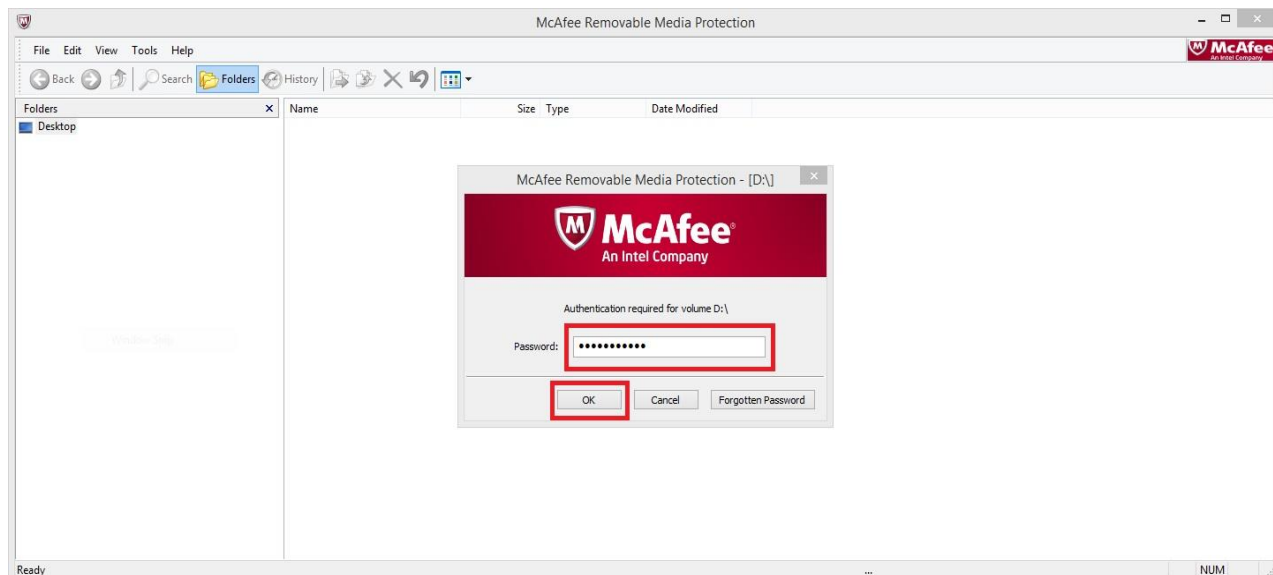
Step 2

Double click on **MfeEERM**



Step 3

The following will be displayed. Enter the **password** and select **OK**.



Your files will be displayed.

